



*The hooded entrance to a new home built on Salt Spring Island, BC.  
[www.sorensenfinehomes.com](http://www.sorensenfinehomes.com)*



# *Designers & Builders*



*The views above are from exceptional properties being developed by Sorensen Fine Homes*



SORENSEN FINE HOMES

The Sorensen Group is a fully integrated development, design and construction company. Our chosen business niche is to develop unique waterfront properties in one of the world's magnificent destinations – southwestern British Columbia.



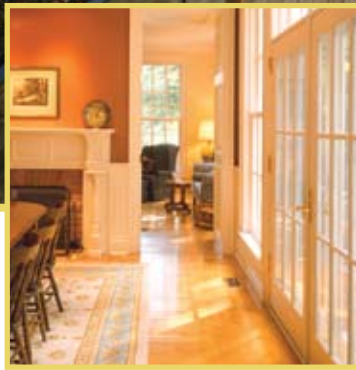
As highlighted by our portfolio, the company designs and builds distinctive homes inspired by the pristine beauty of the ocean coastline and lakeside

properties we have acquired.

The company brings to bear a strong environmental ethic to all of its projects. We engage community participation to ensure that upon completion, a new development protects and celebrates the ecology and timeless sense of place on lands that are our collective heritage.

Environmental stewardship has always been a corporate priority. Planning on former mill sites, such as our recent acquisition of the KFP lands in Nelson, for example, has brought a greater focus on land restoration for Sorensen. Uncovering forgotten creeks and reintroducing native plants to damaged lands takes the company's initiative to a new level of commitment.

As the business grows, demand is leading us to bring our design and construction expertise into the controlled environment of modular manufacturing systems. By incorporating cutting edge technologies, the company will be able to ensure optimal construction efficiency, streamlined building quality, and cost effectiveness.



*A classic Pacific Northwest house designed and built by Sorensen on Salt Spring Island, BC. This robustly detailed home enjoys spectacular ocean views throughout.*



*A 5,500 sq.ft. custom Colonial home in southern Ontario.*



These fully equipped factory-built homes will be easily shipped anywhere in North America and assembled.

Company founders, John and David Sorensen, have three decades of experience in design and construction, stemming from their roots in Toronto. Their residential portfolio in eastern Canada showcases exclusive estate homes with a high level of craftsmanship and traditional detailing.

The brothers moved to British Columbia in the early 90's, founding Sorensen Fine Homes formally in 2000.

Sorensen has always enjoyed good relationships with fine tradesmen and regional craftsmen who are attracted to their high standards. Now, a westcoast lifestyle adds handcrafted cottages and island retreats to their repertoire.

Privately owned, Sorensen has established strong relationships in the real estate community for their conservative approach, thoughtful acquisitions, and track record for company performance.

The professional calibre of the individual team members is the primary asset of the company, and the reputation and success of Sorensen can be attributed to the vision, dedication and commitment shared by the team.

*Dramatic 8 ft. windows overlooking the Gulf Islands from a Mayne Island home.*



*A richly detailed home designed and built by Sorensen Fine Homes on Salt Spring Island, BC.*



*The deck and kitchen of a new 3,500 sq. ft. waterfront home on Salt Spring Island, BC.*

The company has several projects under development. All share the Sorensen stamp of excellence; natural and unspoiled landscapes offering island life within a short reach of Vancouver, Victoria, Seattle, or Spokane. Together these projects total approximately 145 coastline acres and almost 6500 ft. of Kootenay Lake frontage that have attracted international attention.



*Designers & Builders*

For further information on our Design/Build program and project sales inquiries, please contact us at 604-947-2891 sales@soresenfinehomes.com

Mailing Address: P.O. Box 71, Bowen Island BC V0N 1G0

Office Location: 1750 Frances Walk, Bowen Island BC

[www.sorensenfinehomes.com](http://www.sorensenfinehomes.com)